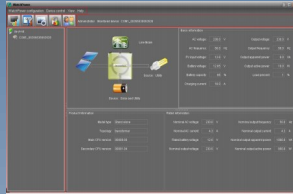
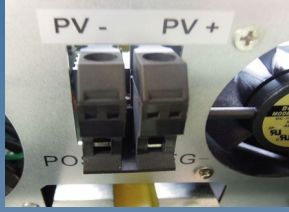


PIP-HS SERIES

- LCD DISPLAY
- HIGH FREQUENCY
- PURE SINE WAVE
- AC CHARGER
- MONITORING
- STACKABLE*
- PB ACID /LiFePO4

* Only on 48v models



NEW

PIP-HS series 812 1212 (1224) 1624 2424 3248 4048

ELECTRICAL SPECIFICATIONS						
Continuous Output	800W	1200W	1600W	2400W	3200W	4000W
Surge Rating	5 seconds max, 2X					
Input Power Factor	0.8					
Input Voltage Range	90~280VAC (Appliance mode), 170~280VAC (UPS mode)					
Input Max Voltage	300VAC					
Input/Output Frequency	50Hz / 60Hz					
Output Voltage	230VAC±5%					
Output Waveform	Pure Sine Wave					
Output Regulation	< 3% RMS for battery voltage range					
Output Short Circuit	Circuit Breaker					
Peak Efficiency	>95% (line mode) / 91% (inverter mode)					
Nominal DC Voltage	12V	12V (24V)	24V	48V		
Transfer Time	<10ms (UPS mode), <20ms (Appliance mode) **					
Charging Mode	3-stage					
MAX DC Input	15V	15V	30V	60V		
Bulk Volt (Flooded, AGM)	14.6, 14.1V	14.6, 14.1V (29.2, 28.2V)	29.2, 28.2V	58.4, 56.4V		
Float Volt	13.5V	13.5V (27V)	27.0V	54.0V		
AC Recharging Current	10/20amp	60 amp	20/30amp	60 amp		
No Load Consumption	<15W	<20W	<20W	<50W		
Power Saving Consumption	<5W	<10W	<10W	<15W		
SOLAR CHARGER						
Type, Max Charging Current	PWM, max 50 Amp					
System DC Voltage	12V	12V (24V)	24V	48V		
Max PV Input Voc	30V	40V (75V)	60V	90V		
Standby Power	1W	1W (2W)	2W			
ENVIRONMENTAL / MECHANICAL SPECIFICATIONS						
Certification	CE					
Operating/Storage Temp.	0°C ~ 55°C / -15°C~ 60°C					
Operating Humidity	20~90%RH Non-Condensing					
Dimension	316*240*95mm	355*272*100mm	355*272*100mm	468*295*120mm		
Net Weight	5.0Kg	6.8Kg	6.5Kg	7.0Kg	10Kg	10Kg

Note: Product specifications are subject to change without prior notice. MPP Solar is a registered trademark of MPP Solar Inc.

*For LiFePo4 suitability, please check with your battery supplier on charging and BMS requirement.

** Inverter-Generators are recommended for better compatibility

KEY FEATURES

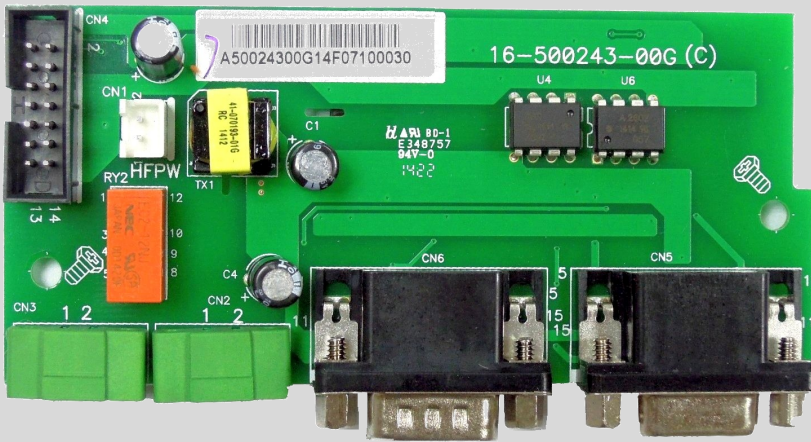
- High frequency pure sine wave design
- Multi-functional inverter-charger with programmable menus
- Inverter + 60A AC Charger + 50A Solar Charger
- Total system charging : 50A + 60A = 110A !!
- Adjustable Bulk/Float Volt and charging current
- Wide AC input range
- Lightweight, easy to install
- 2X surge capacity max 5s
- FREE monitoring software
- LCD Display + LED indicators
- Support main battery types e.g. Lead Acid, LiFePO4*
- Built-in genset starter dry contact**
- USB communication interface

Only 48V models are PARALLEL-READY. Optional Parallel Kit is required for all units in parallel and sold separately.





PARALLEL KIT



This accessory is applicable only to select 48VDC models of HS and MS series inverters. It is a required component to be installed in every unit of a parallel system. A parallel kit includes:

- 1 X PARALLEL BOARD
- 1 X PARALLEL COMM CABLE
- 1 X CURRENT SHARING CABLE

***IMPORTANT:** please do not wire 12v or 24v HS/MS inverters in parallel, as this will result instant damage of all units!

REMOTE CONTROL DISPLAY MODULE



This device is an extension of the HS/MS inverter's LCD module and allows user to implement control on settings and monitoring from a distance away.

This remote module can coexist with the built-in LCD device and is compatible with most 12v/24v/48v models in the HS/MS inverter series*.

Maximum operating distance: 15m via RJ45 network cable

*This accessory is not fully compatible with 1212HS and 1212MS. Some parameters may not show

**For more details on pricing, availability and installation guide, please contact us directly.